

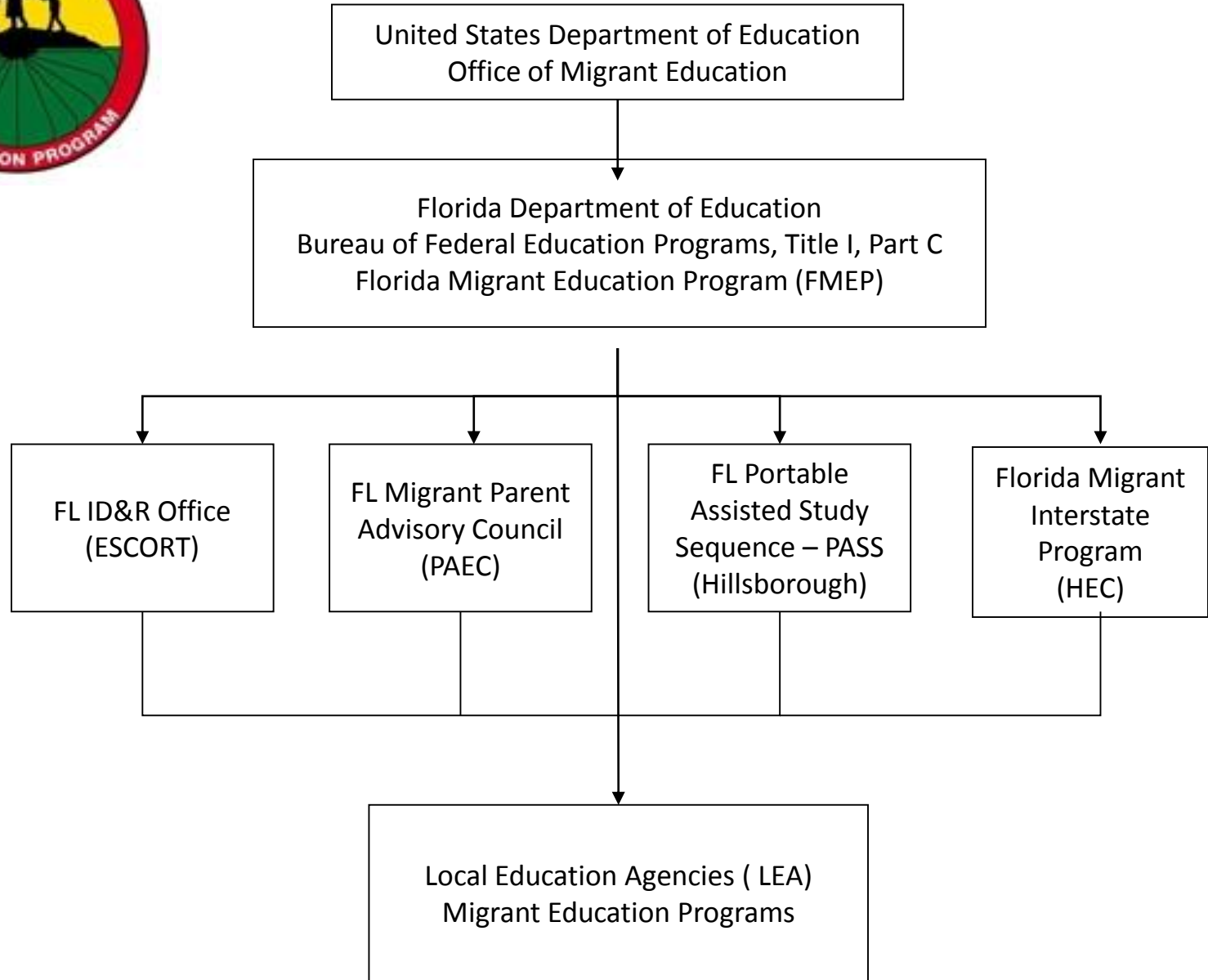


Florida Migrant Education Program's Florida Migrant Interstate Program Intra/Interstate Services and Coordination

Florida Migrant Education Program
Implementation Strategies Meeting V
September 23, 2015



Florida Migrant Education Program Organization Chart





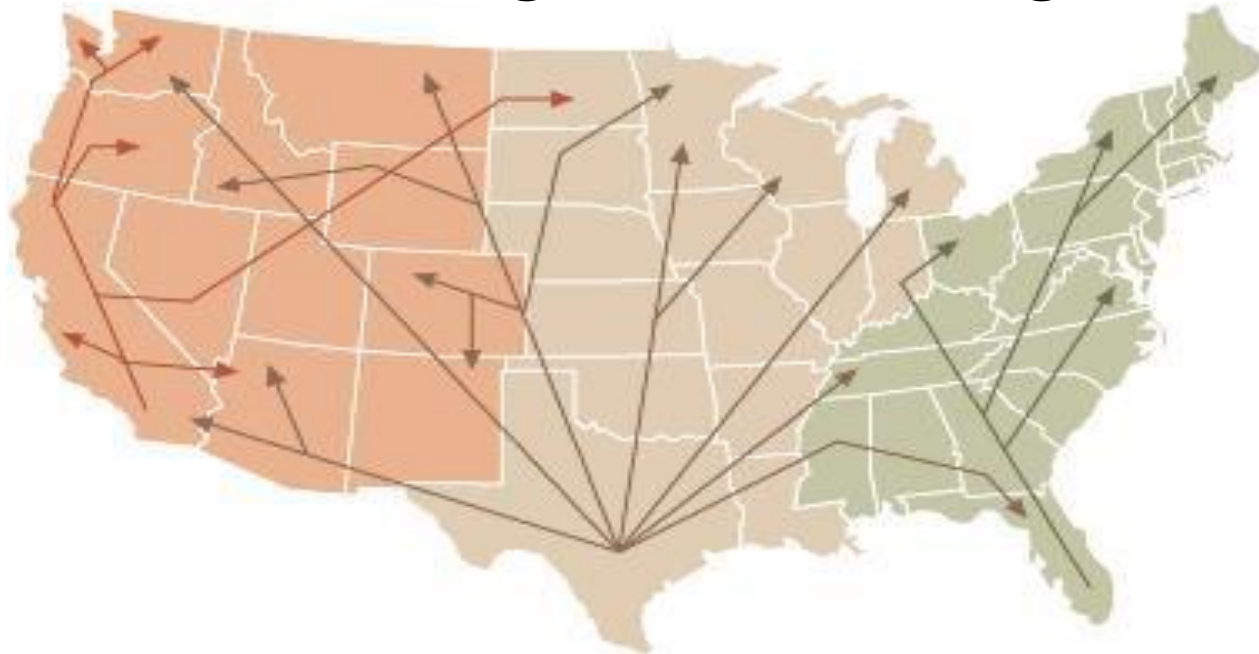
Florida Migrant Interstate Program
Kim Manley Fioramanti-Services Coordinator

- *Provides timely technical assistance throughout Florida, the nation and bi-nationally regarding transcript discrepancies and unresolved records transfer cases
- *Collaborates with Consulate Offices and The Office of Migrant Education regarding records transfer and teacher exchange programs
- *Serves as the primary point of contact to call or email regarding credit accrual issues to ensure timely transfer of (or technical assistance with) academic and health records for migrant students following district attempts at resolve (example- MSIX records search)
- *Publishes annual Florida Migrant Education Program Directory, FMIP Alerts, and The Florida Migrant Education Exemplary Book
- *Florida Agri-business and Guidance Counselor Liaison
- *Provides Academic Advocacy technical assistance and scholarship information upon request.



INTERSTATE COORDINATION

Florida is a Recognized “Sending” State



- Traditional pattern of movement- to name a few.....North Florida, North Carolina, Georgia, Michigan, Maine, Ohio, New York, Tennessee
- New trends in movement _____

Florida Migrant Interstate Program

The Importance of Inter/Intastate Coordination Efforts

Interstate Coordination of Services is a Federal mandate for Migrant Education Programs (MEP) throughout the United States. Large migrant population/sending states i.e. Florida have programs in place like the Florida Migrant Interstate Program (FMIP) to address the federal mandate.

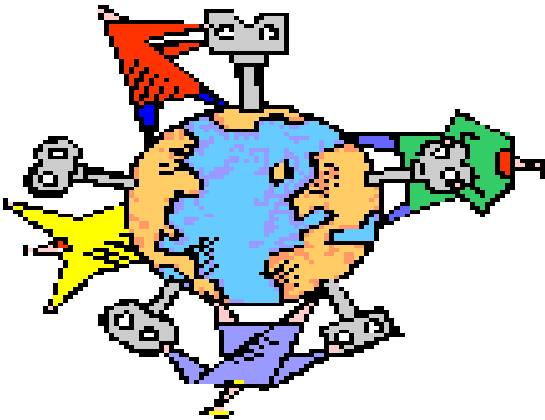
Since the overarching goal of the Migrant Education Program is for migrant students to become successful high school graduates is directly linked to timely academic records transfers, credit accrual and credit retrieval assistance provided via effective intra/interstate collaboration, one of my main responsibilities as the FMIP Services Coordinator is to assist districts, other states and countries, and migrant students with credit accrual and discrepancy issues or concerns.

In addition to enhanced migrant student retention and migrant student graduation rates, Intra/Intrastate Coordination is a key component of effective, efficient and timely ID&R efforts and MSIX data base usage.

Therefore, all aspects of **Intra/Interstate Coordination** of services on behalf of migrant students and families are important components of program evaluation compliance.

The Florida Migrant Education Program (FMEP)

**Protocol and Procedures
for Florida Inter/Intrastate
Transfer/Exchange of Migrant
Student Records**



Interstate Protocol and Procedures for Migrant Student Record Transfer/Exchange

- Upon enrollment of a migrant student in a Florida school, the receiving LEA must access student records via the MSIX data base and/or request student academic and health records from the sending state within **five** days. Upon receipt of the enrolled student records, the Florida local MEP must collaborate with the Florida LEA to ensure that the local and state student databases are updated within the **five** day window.
- Upon withdrawal of a migrant student from a Florida school, the LEA must update the student's academic and health record in the MSIX database system and the local student database within **five** days of withdrawal from school. This updated record is uploaded to the state's student database within **five** days.
- Upon request from another state, the local Florida MEP will collaborate with the Florida LEA to transfer migrant student records within **five** days.
- Always maintain documentation at the local level of intrastate communication with other MEPs and/or LEAs regarding exchange of student records. (aligns with compliance item BIC-2)
- If after five business days, the LEA and local MEP have encountered difficulties in exchanging migrant student's academic and health records to or from another state, contact the **Florida Migrant Interstate Program (FMIP) Services Coordinator** to assist with resolving the exchange of student records.
- The **FMIP Interstate Services Coordinator** will include appropriate MEP and LEA staff in any communication with other states to obtain access and resolve records exchange issues for migrant students transferring in and out of Florida schools.
- In a unified manner, Florida MEP, FMIP and/or Florida ID&R staff will collaborate with the sending or receiving MEP to coordinate appropriate MEP services for the migrant student/family.

NOTE: The MSIX Database should be used in conjunction with procedures already established to facilitate the inter/intrastate exchange of migrant records.

Contact Information

Kim Manley Fioramanti

Services Coordinator

Florida Migrant Interstate Program

Heartland Educational Consortium

1096 U.S. 27 North Suite #1094

Lake Placid, FL 33852

863-531-0444 ext 208

kim.fioramanti@heartlanded.org

